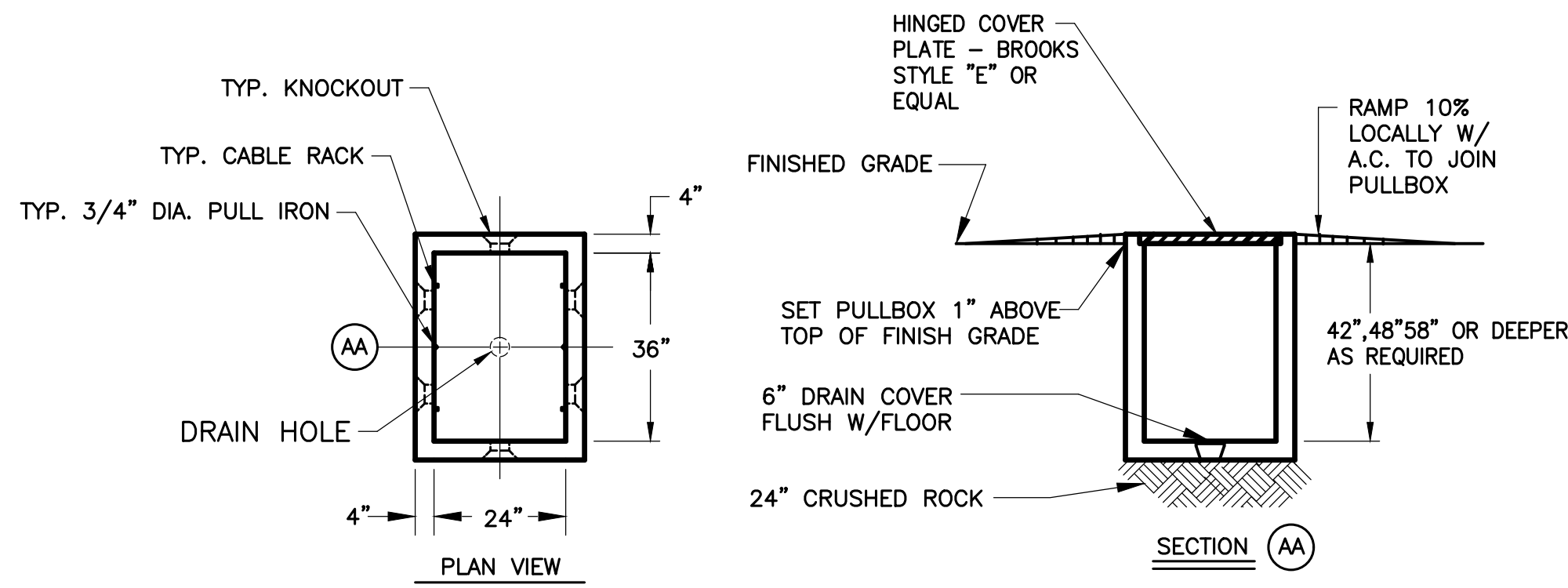
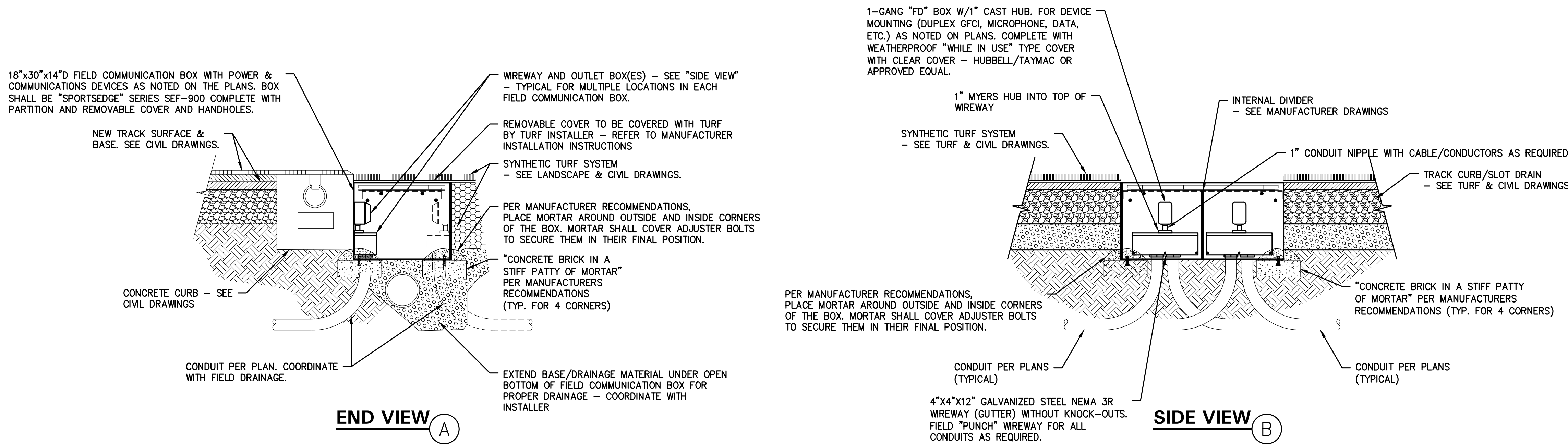


CUSTOM PRESSBOX MICROPHONE PATCH PANEL A
NO SCALE E3.02



- NOTES:
1. PRECAST CONCRETE PULLBOX SHALL BE BROOKS 100FPB(2'x3') SERIES AND 400DPB (3'x5') SERIES OR EQUAL BY QUICKSET. PULLBOX SHALL BE COMPLETE WITH STAINLESS STEEL FLATHEAD SCREWS AND SELF CLEANING HOLES. PROVIDE CABLE RACKS ON WALLS INDICATED. EACH RACK SHALL BE EQUIPPED WITH THREE (3) PORCELAIN CABLE HOLDERS ON VERTICAL STEEL MOUNTING BAR. STEEL COVER PLATES SHALL BE "ALGRID" AS MANUFACTURED BY "SAFE-WALK INC." AND SHALL CONFORM TO ASTM-A-36 AND BE GALVANIZED. COVER SHALL BE RATED FOR HEAVY VEHICULAR TRAFFIC.

UNDERGROUND PULLBOX DETAIL C
NO SCALE E3.02

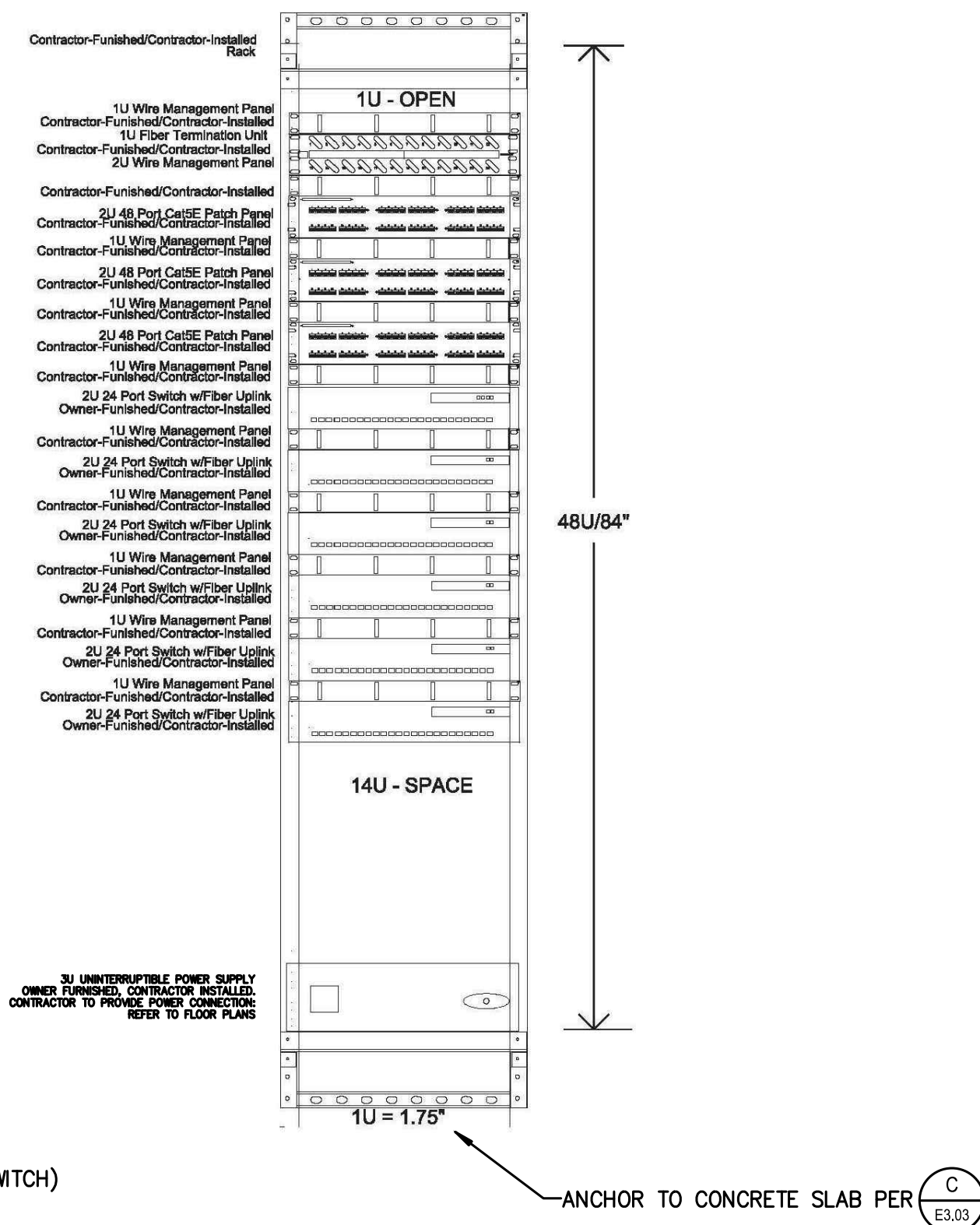


IN-GRADE FIELD COMMUNICATION BOX DETAILS B
NO SCALE E3.02

VERTICAL CABLE MANAGMENT AS REQUIRED
- CONTRACTOR FURNISHED, CONTRACTOR INSTALLED

BOND THE RACK TO THE GROUND BAR WITH
3/4\"/>

PATCH CORDS FOR ALL ACTIVE PORTS REQUIRED,
CONTRACTOR FURNISHED & INSTALLED



MAXIMUM 120 CAT 6 DROPS PER 84\"/>

RACK CONTAINS MIN. 50% EXPANSION SPACE
(THREE MORE FUTURE SWITCHES FOR ULTIMATE CAPACITY OF 216 CAT 6 DROPS)

FIBER OPTIC CABLE HOMERUN SHALL BE AS INDICATED ON THE RISER DIAGRAM.

TYPICAL 84\"/>

NOTE: CONTRACTOR TO CUSTOMIZE THIS DETAIL FOR REQUIRED EQUIPMENT FOR EACH
RACK AND INCLUDE IN SUBMITTAL FOR REVIEW.